

OBSERVATORI DE LES TRAJECTÒRIES EDUCATIVES

Juliol 2017



	Institut 1			Institut 2			Total		
	Nois	Noies	Total	Nois	Noies	Total	Nois	Noies	Total
1994	34	32	66	32	18	50	66	50	116
1995	38	20	58	36	25	61	74	45	119
1996	42	42	84	24	24	48	66	66	132
1997	41	40	81	19	20	39	60	60	120
1998	41	40	81	31	24	55	70	51	121
1999	43	40	83	24	15	39	67	55	122
2000	37	37	74	25	18	43	62	55	117

Distribució per gènere

	Institut 1						Institut 2						Total					
	Nois		Noies		Total		Nois		Noies		Total		Nois		Noies		Total	
1994	8	22%	4	8	12	18%	8	23%	3	18%	11	20%	16	23%	7	14%	23	19%
1995	9	22%	9	9	18	23%	9	16%	5	18%	11	17%	15	19%	14	28%	29	23%
1996	7	16%	5	7	12	13%	5	21%	6	25%	11	23%	12	17%	11	15%	23	16%
1997	11	23%	6	11	17	19%	6	27%	4	16%	10	21%	17	25%	10	14%	27	20%
1998	9	22%	4	9	13	19%	8	24%	3	10%	11	17%	17	23%	7	12%	4	18%
1999	10	22%	9	10	19	22%	6	19%	6	25%	12	22%	16	21%	15	23%	31	22%
2000	8	22%	2	8	10	13,16%	3	11%	2	10%	5	10%	11	17%	4	7%	15	12%

Alumnat Aula Oberta

Alumnat USEE						
	Nois		Noies		Total	
1994	6	17%	0	0%	6	11%
1995	1	3%	0	0%	1	2%
1996	1	4%	0	0%	1	2%
1997	1	5%	1	4%	2	4%
1998	3	9%	2	7%	5	8%
1999	0	0%	0	0%	0	0%
2000	1	3,7%	0	0%	1	2%

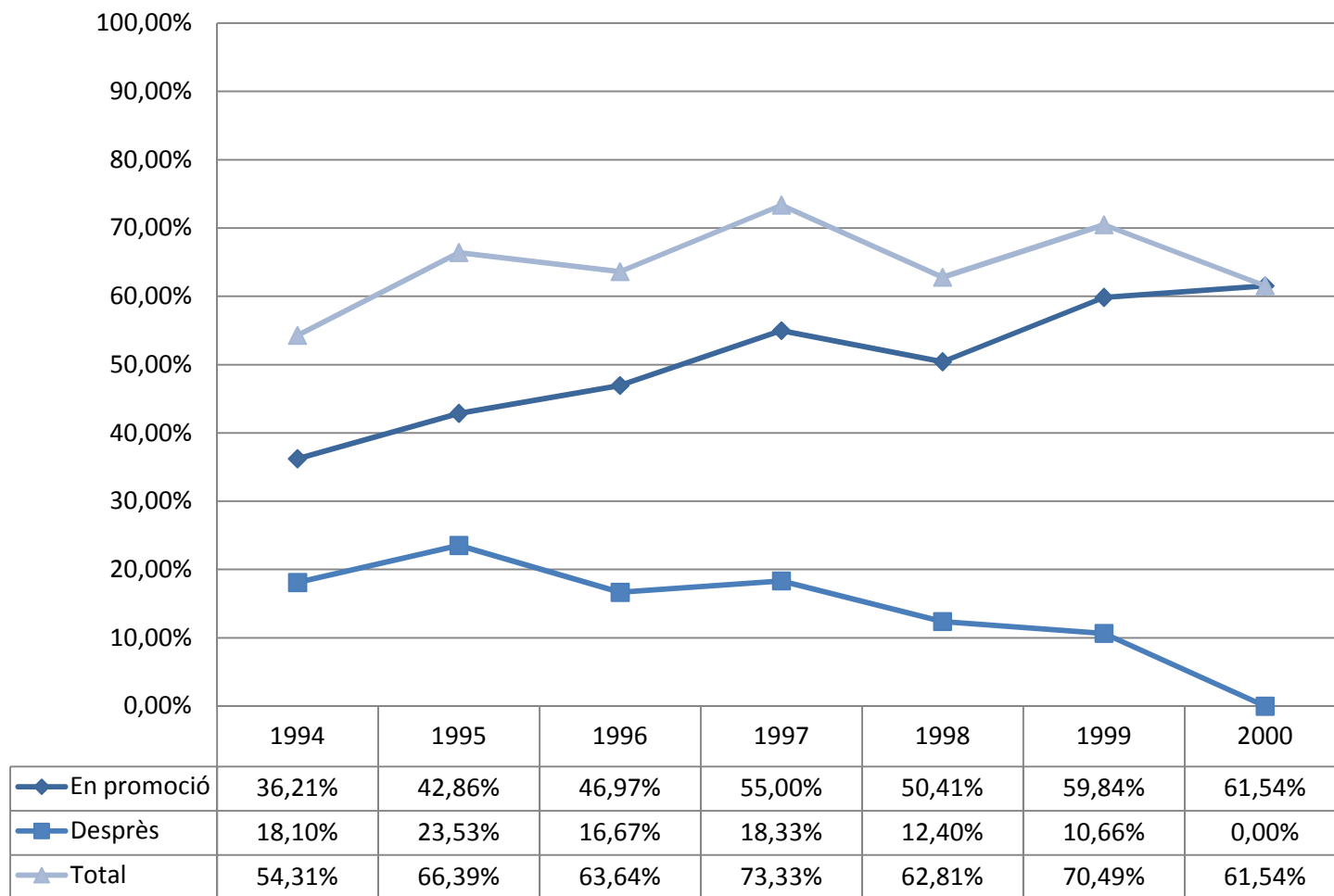
Alumnat USEE

	Institut 1						Institut 2						Total						Catalunya
	Nois		Noies		Total		Nois		Noies		Total		Nois		Noies		Total		
1994	7	19%	10	31%	17	25%	7	20%	0	0%	7	13%	14	19%	10	20%	24	20%	8,4%
1995	6	15%	2	9%	8	13%	6	16%	3	11%	9	14%	12	15%	5	10%	17	13%	8,6%
1996	10	22%	10	21%	20	22%	1	4%	1	4%	2	4%	11	16%	11	16%	22	16%	8,5%
1997	7	15%	7	16%	14	15%	1	5%	3	12%	4	9%	8	12%	10	14%	18	13%	8%
1998	5	12%	4	14%	9	13%	2	6%	5	17%	7	11%	7	9%	9	16%	16	12%	8,1%
1999	2	4%	1	2%	3	3%	5	16%	1	4%	6	11%	7	9%	2	3%	9	6%	7,7%
2000	2	5%	3	8%	5	7%	3	11%	2	9%	5	10%	5	8%	5	8%	10	8%	7,3%

Alumnat que inicia l'educació secundària obligatòria fora de la seva promoció

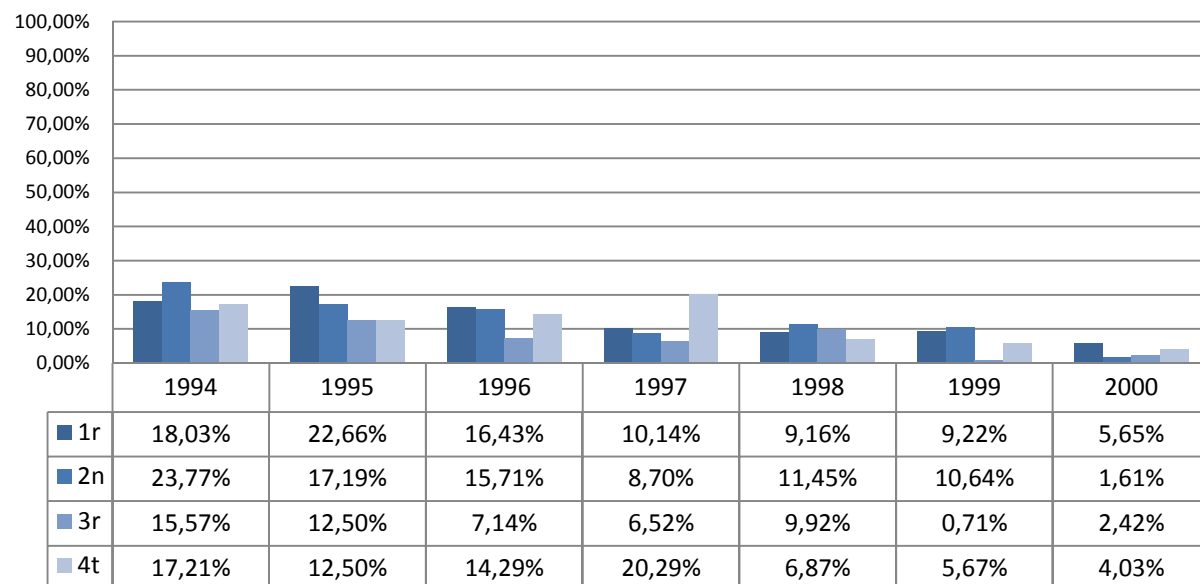
ACREDITACIONS

Observatori TET Curs 2015 - 2016



REPETICIONS

Observatori TET Curs 2015 - 2016

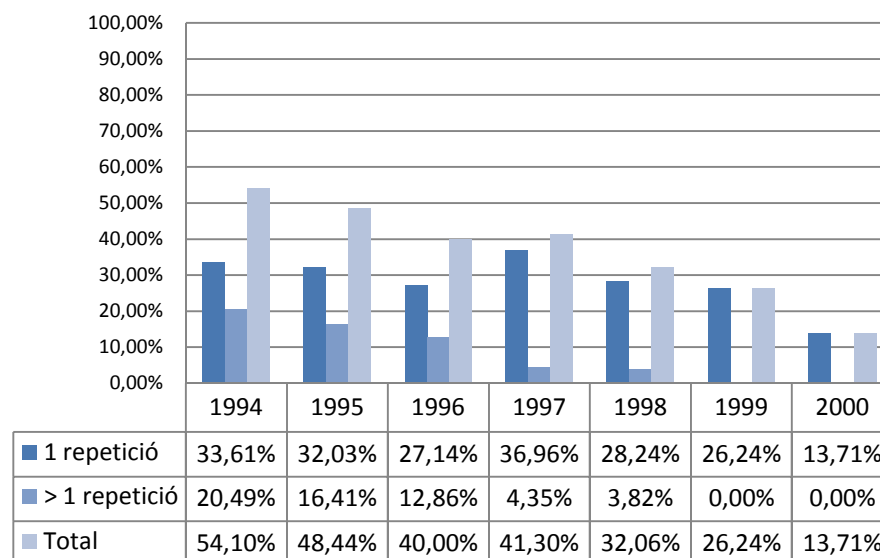


Alumnat repetidor per cursos

Catalunya; curs 2015/16

1r	4,3%
2n	5,5%
3r	5,8%
4t	5,6%

Alumnat repetidor



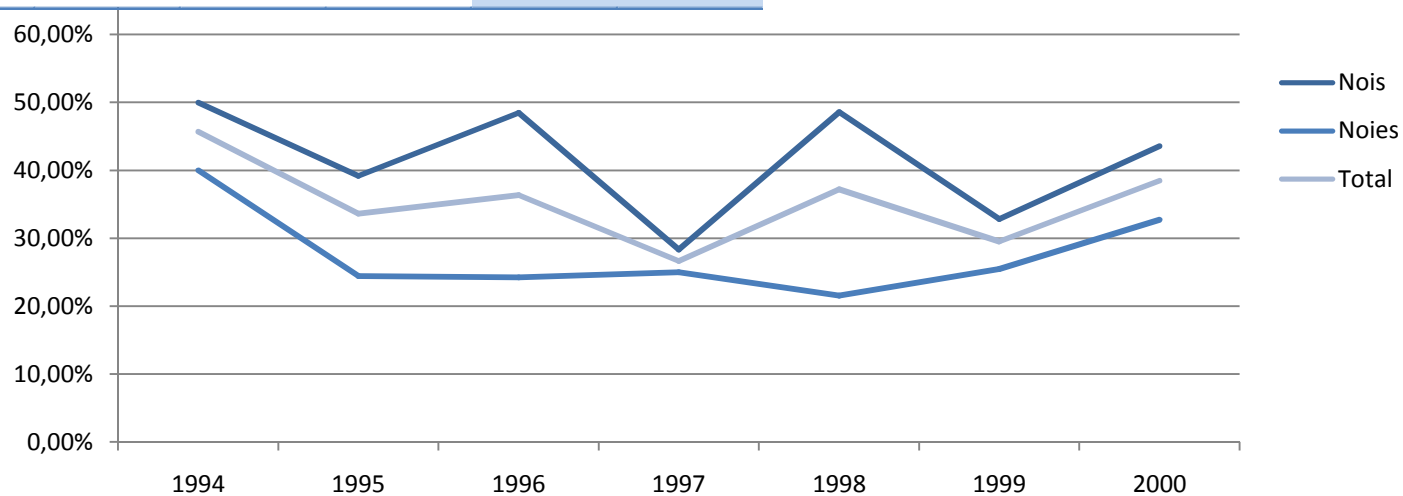
1997	Nombres alumnes		Acredita	No acredita	Canvi de centre
1 repetició	51	36,96%	42,91%	38,97%	18,12%
>1 repetició	6	4,35%	0%	50,00%	50,00%
0 repeticions	81	58,70%	80,49%	10,59%	8,92%

1998	Nombres alumnes		Acredita	No acredita	Canvi de centre
1 repetició	37	28,24%	30,12%	56,29%	13,60%
>1 repetició	5	3,82%	33,33%	66,67%	0%
0 repeticions	89	67,94%	70,82%	23,23%	5,95%

ALUMNAT NO ACREDITAT

Observatori TET Curs 2015 - 2016

	Nois		Noies		Total	
1994	33,00	50,00%	20,00	40,00%	53,00	45,69%
1995	29,00	39,19%	11,00	24,44%	40,00	33,61%
1996	32,00	48,48%	16,00	24,24%	48,00	36,36%
1997	17,00	28,33%	15,00	25,00%	32,00	26,67%
1998	34,00	48,57%	11,00	21,57%	45,00	37,19%
1999	22,00	32,84%	14,00	25,45%	36,00	29,51%
2000	27,00	43,55%	18,00	32,73%	45,00	38,46%



Alumnat Acreditat (61,54%)

	<i>Batx</i>		CFGM		No hi ha dades	
Institut 1	0	0%	0	0%	44	3,92%
Institut 2	16	57,14%	10	35,71%	2	7,14%
Total	16	22,22%	10	13,89%	46	63,89%

Alumnat no acreditat (40,16%)

	Prova accés		PQPI		Sense ESO No formació		Segueix ESO		GESO		No hi ha dades	
Institut 1	0	0%	5	17,24%	4	13,79%	6	20,69%	0	0%	15	50,00%
Institut 2	0	0%	1	6,67%	5	33,33%	4	26,67%	0	0%	5	33,33%
Total	0	0%	5	17,24%	9	20,45%	10	22,73%	0	0%	20	44,44%

Alumnat Acreditat						
	Batx		CFGM		No hi ha dades	
1994	30	25,86%	6	5,17%	6	5,17%
1995	38	31,93%	12	10,08%	1	0,84%
1996	41	31,06%	20	15,15%	1	0,76%
1997	44	36,67%	18	15,00%	4	3,33%
1998	44	36,36%	9	7,44%	4	3,28%
1999	48	39,34%	21	17,21%	7	3,28%
2000	16	13,68%	10	8,55%	46	39,32%

ITINERARIS

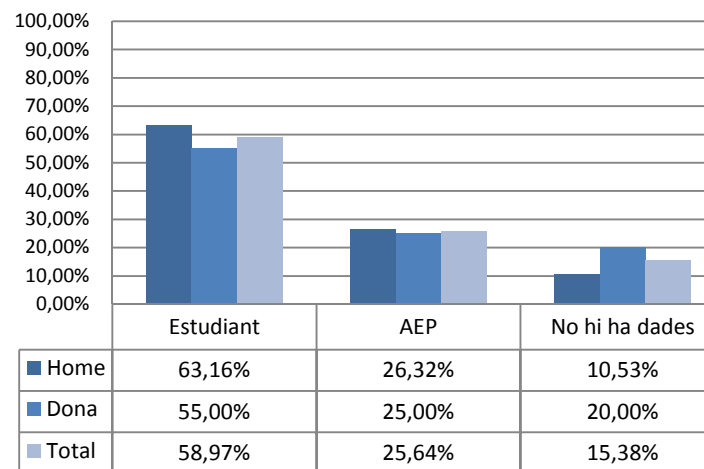
Alumnat no acreditat													
	PQPI		Prova d'accés CFGM		Sense ESO No formació		Segueix ESO		GESO		No hi ha dades		Total no acreditat
1994	8	6,90%	0	0%	13	11,21%	50	43,10%	1	0,86	2	1,72%	63,79%
1995	12	10,08%	1	0,84%	6	5,04%	48	40,34%	0	0%	1	0,84%	57,14%
1996	12	9,09%	0	0%	12	9,09%	44	33,33%	1	0,76%	1	0,76%	53,03%
1997	1	0,83%	0	0%	13	10,83%	39	32,50%	0	0%	1	0,83%	45,00%
1998	7	5,79%	0	0%	14	11,57%	30	24,79%	0	0%	9	7,44%	49,59%
1999	4	3,28%	0	0%	10	8,20%	28	22,95	0	0%	7	5,74	40,16%
2000	5	4,27%	0	0%	7	5,98%	9	7,69%	0	0%	23	19,66%	37,61%

ITINERARIIS POST PROMOCIÓ 1997 i 1998

Observatori TET Curs 2015

	<i>Alumnat contactat</i>	<i>Alumnat no contactat</i>
Institut 1	17,28%	82,72%
Institut 2	89,47%	15,38%
Total	38,33%	61,67%

Promoció 1997



	<i>Alumnat contactat</i>	<i>Alumnat no contactat</i>
Institut 1	13,64%	87,88%
Institut 2	81,82%	18,18%
Total	44,63%	56,20%

Promoció 1998

